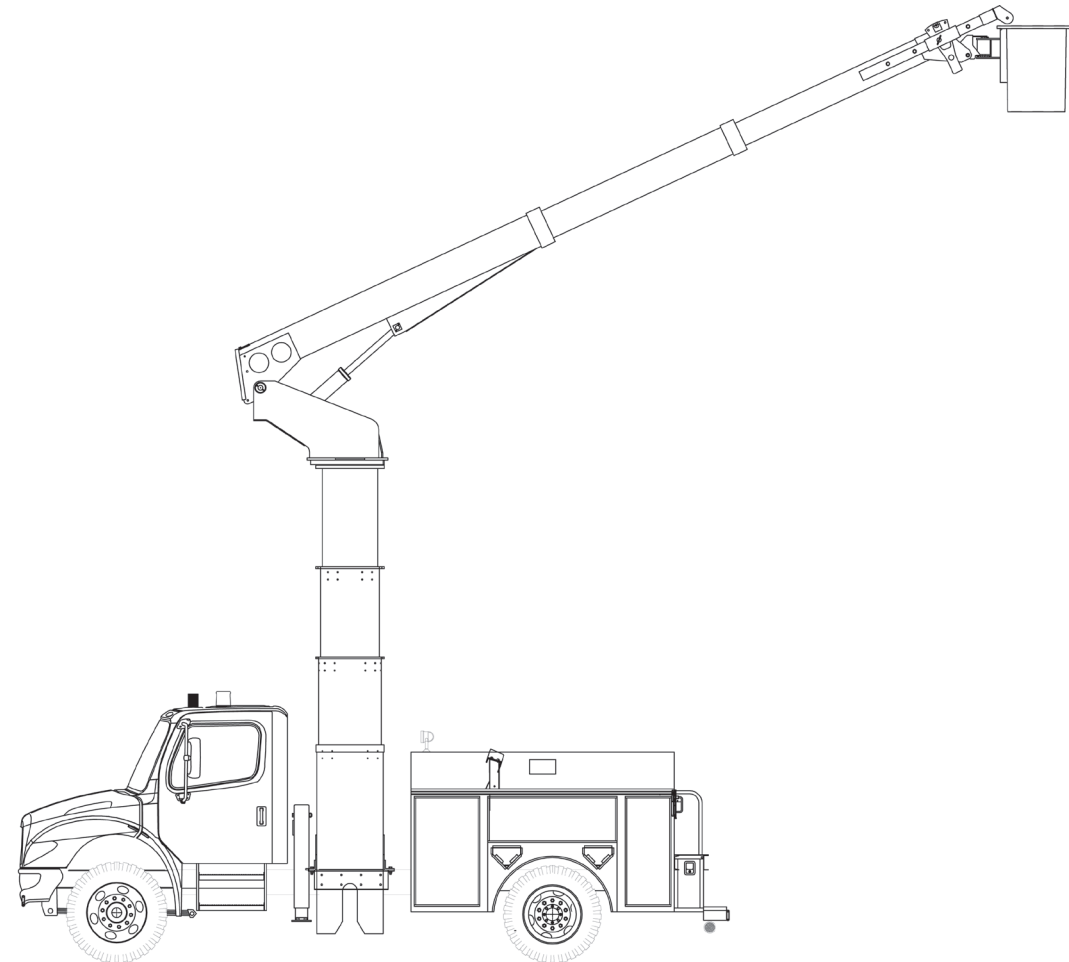


THE HYDRAULIC PEDESTAL ELEVATOR



Three-section, fully hydraulic pedestal elevator.
Unique design that helps elevate your bottom line.

AERO-LIFT By



We Build Solutions

For more information, visit us at

WWW.SMFTRUCK.COM

1226 Little Gap Rd., Palmerton, PA 18071

(610) 824-7000

NOTE -All aerial units designed in accordance with ANSI A92.2 specifications

-Specifications are subject to change without notice

-All photographs and illustrations represented in this literature are for informational purposes only

HE HYDRAULIC PEDESTAL ELEVATOR

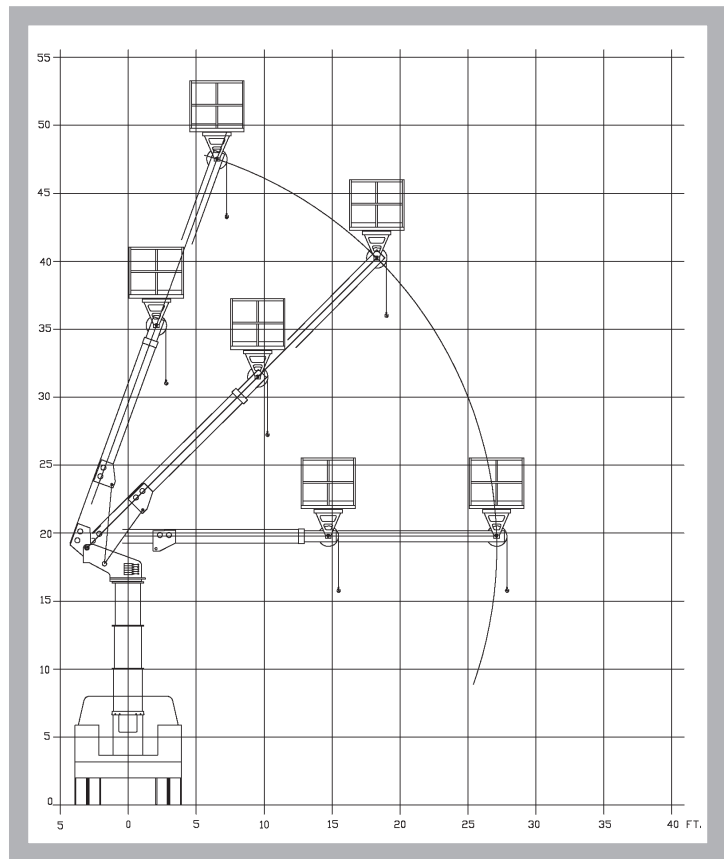
General Specifications:

Hydraulic elevator to lift any one of the Aero-Lift by SMF two or three boom telescopic aerial platforms up to 55' working heights.

This elevator gives an additional 10' of vertical working height.

Pedestal elevator is raised by a double-acting cylinder. These cylinders have integral holding valves to prevent free fall in the event of hose failure.

Stabilization – torsion bar as well as various outrigger configurations are available, depending upon capacity and size of unit.



AERO-LIFT By



We Build Solutions

For more information, visit us at

WWW.SMFTRUCK.COM

1226 Little Gap Rd., Palmerton, PA 18071

(610) 824-7000

NOTE -All aerial units designed in accordance with ANSI A92.2 specifications

-Specifications are subject to change without notice

-All photographs and illustrations represented in this literature are for informational purposes only